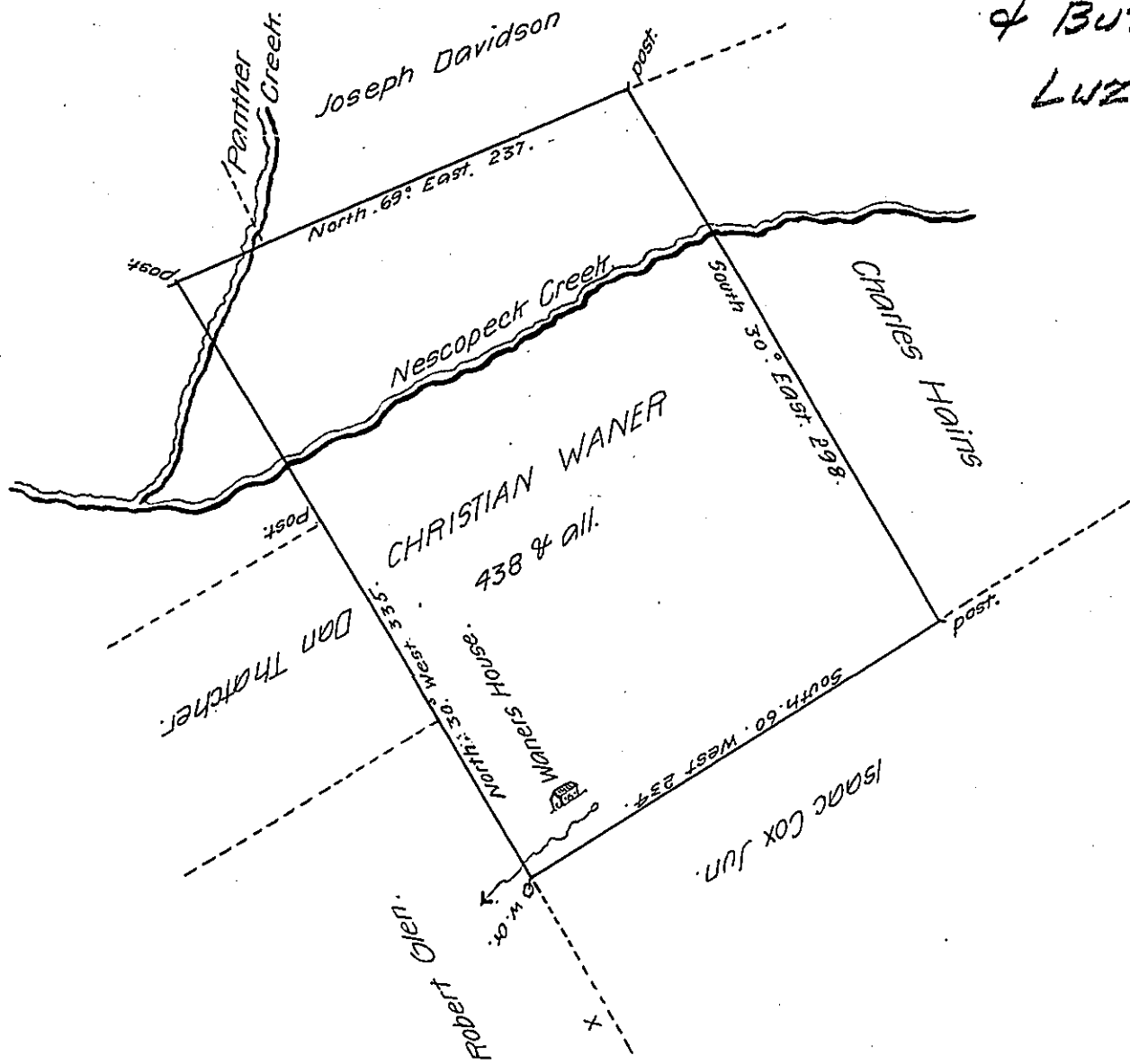


Sug. Loaf 96
 & Butler —
 Luzerne.



A Draft of a tract of Land Situate on Nescopeck Creek in the Township of
 Sugar Loaf County of Luzerne Containing four hundred & thirty eight Acres
 with the usual allowance of six per centum for roads Including the Im-
 provements of Christian Waner Surveyed the 26th day of April A.D. 1810 for
 the said Christian Waner In pursuance of a warrant to him, Dated
 the 17th February A.D. 1810.

Certified by Jonathan Stevens. D.S.

Andrew Porter Esq. S. Gen.

IN TESTIMONY that the above is a copy of the original remaining on file in
 the Department of Internal Affairs of Pennsylvania, made
 conformably to an Act of Assembly approved the 16th day of
 February 1833, I have hereunto set my hand and caused
 the Seal of said Department to be affixed at Harrisburg,
 this thirteenth day of June, 1907.

Henry Houck
 Secretary of Internal Affairs.